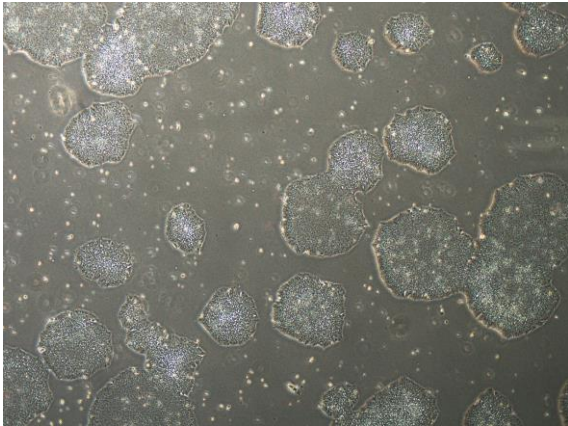
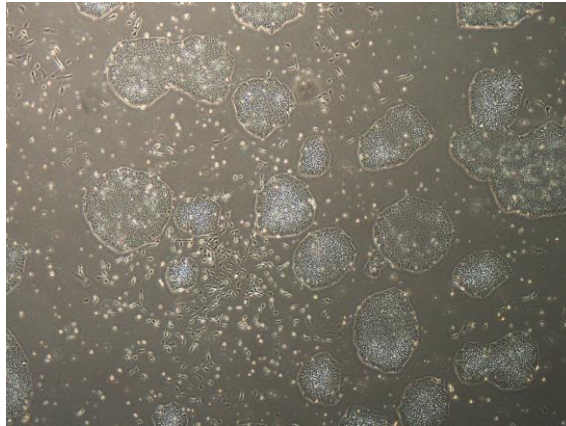


【 CiRA-j-1583 】 Morphology of iPSC colonies

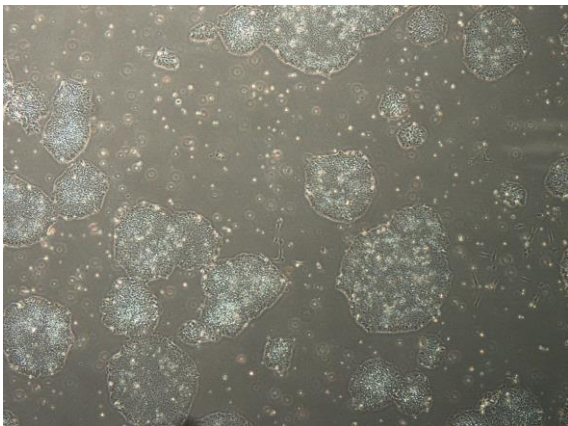
CiRA-j-1583-A: passage-3



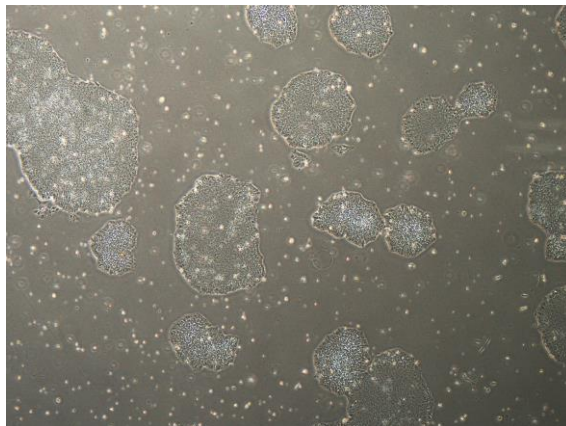
CiRA-j-1583-B: passage-3



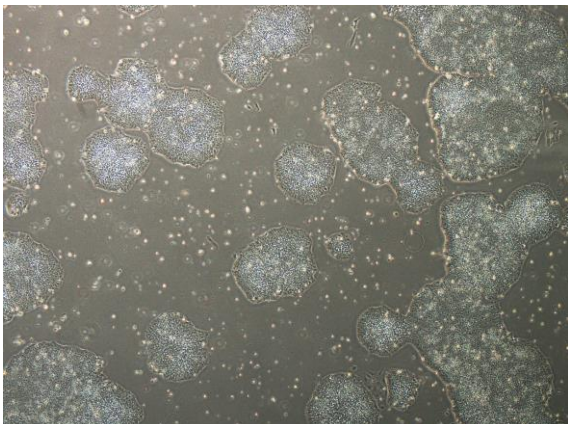
CiRA-j-1583-C: passage-3



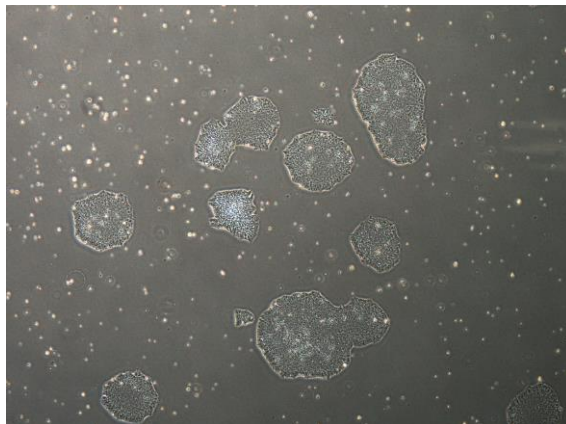
CiRA-j-1583-D: passage-3



CiRA-j-1583-E: passage-3



CiRA-j-1583-F: passage-3



(All images were captured at 4x magnification)